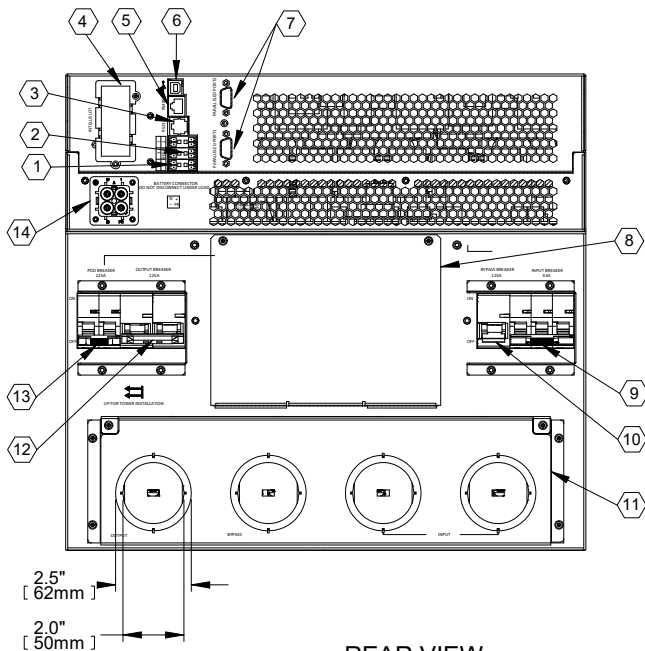
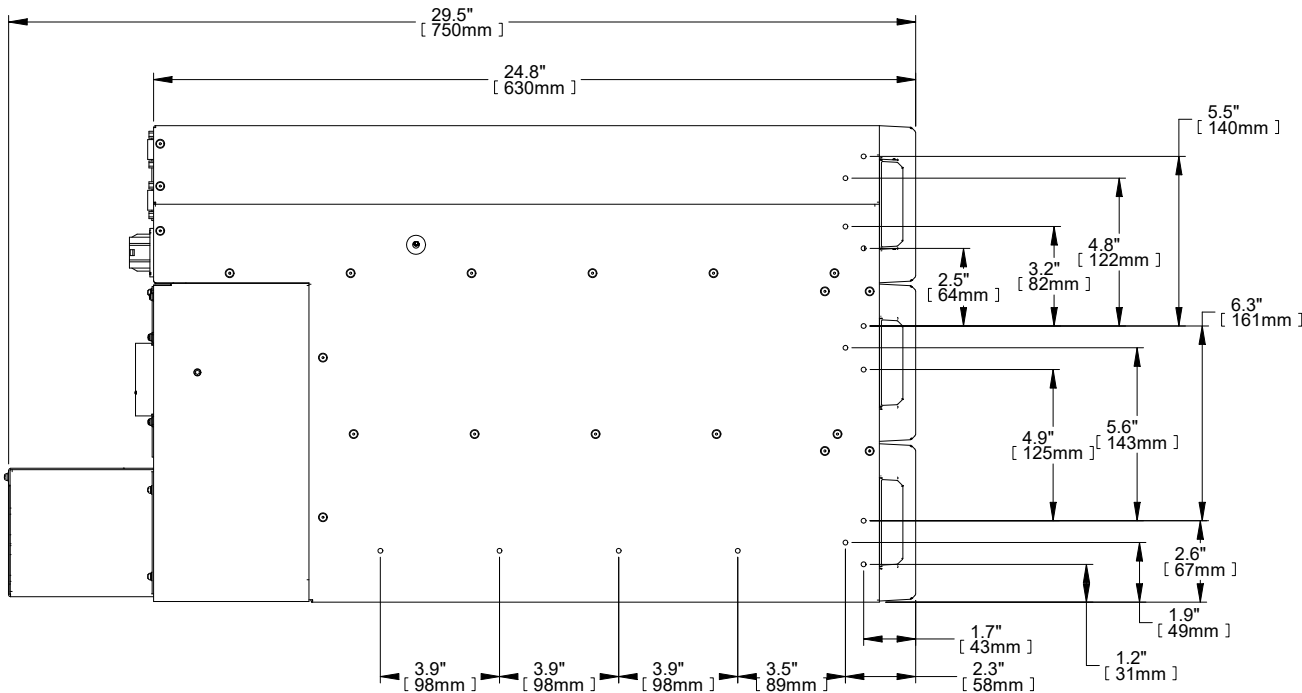


FRONT VIEW

FOR DETAIL
SEE DRAWING
GXT5-DISPLAY



REAR VIEW



SIDE VIEW

- | | |
|--------------------------------------|--|
| ① TERMINAL BLOCK COMMUNICATION | ⑧ COVER FOR POD CONNECTION |
| ② REPO (REMOTE EMERGENCY POWER OFF) | ⑨ INPUT CIRCUIT BREAKER |
| ③ RS232 | ⑩ BYPASS CIRCUIT BREAKER |
| ④ LIEBERT INTELLISLOT PORT | ⑪ HARDWIRED POWER INPUT AND OUTPUT CONNECTIONS |
| ⑤ RS485 | ⑫ OUTPUT CIRCUIT BREAKER |
| ⑥ USB PORT | ⑬ POD BREAKER |
| ⑦ DB9 PORTS (PARALLEL COMMUNICATION) | ⑭ EXTERNAL BATTERY CONNECTOR |

- NOTES:
1. UNIT DIMENSIONS (WxDxH): 430mm x 630mm x 394mm (9U)
(16.9") x (24.8") x (15.5")
 2. UNIT WEIGHT: 135.2kg (298lbs)
 3. SHIPPING DIMENSIONS (WxDxH): 900mm x 1200mm x 700mm
(35.4") x (47.2") x (27.6")
 4. SHIPPING WEIGHT: 190kg (418.9lbs)
 5. MINIMUM AIRFLOW CLEARANCE IS 4.0" (100mm) FRONT AND REAR.

DRAWN BY B. LAY	SHEET NO. 1 OF 1	OUTLINE DRAWING GXT5 16/20kVA 230 VAC RACK/TOWER UPS	DWG. NO. GXT5-16K 20KI OD	DATE 11/8/19	REV. # 1	1050 DEARBORN DRIVE P.O. BOX 29186 COLUMBUS, OHIO 43229	
CHK BY L. JOHNSON	ECN NO.						
REF. DWG.	ORDER NO.						

FILE NAME: T:\dpgeng\GXT5\Submittals\A)Outline Dwg\GXT5-16K_20KI_OD