



Vertiv™ CoolPhase Condensing Unit

Submittals Addendum

Wiring Diagrams for Condensing Units of 3.5, 7, 11, 15, 21 and 28 kW

The information contained in this document is subject to change without notice and may not be suitable for all applications. While every precaution has been taken to ensure the accuracy and completeness of this document, Vertiv assumes no responsibility and disclaims all liability for damages result from use of this information or for any errors or omissions.

Refer to local regulations and building codes relating to the application, installation, and operation of this product. The consulting engineer, installer, and/or end user is responsible for compliance with all applicable laws and regulations relation to the application, installation, and operation of this product.

The products covered by this instruction manual are manufactured and/or sold by Vertiv. This document is the property of Vertiv and contains confidential and proprietary information owned by Vertiv. Any copying, use, or disclosure of it without the written permission of Vertiv is strictly prohibited.

Names of companies and products are trademarks or registered trademarks of the respective companies. Any questions regarding usage of trademark names should be directed to the original manufacturer.

Technical Support Site

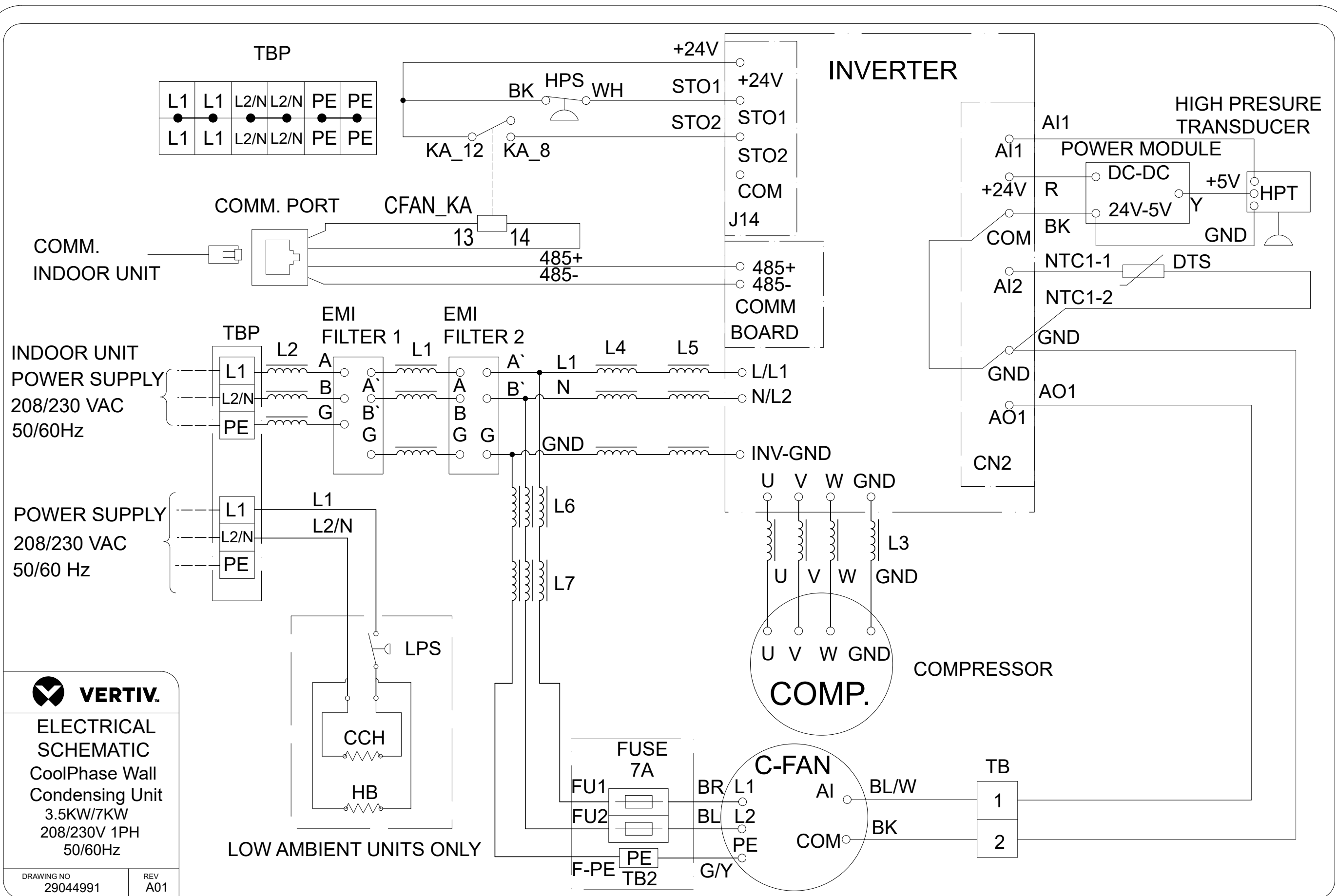
If you encounter any installation or operational issues with your product, check the pertinent section of this manual to see if the issue can be resolved by following outlined procedures.

Visit <https://www.vertiv.com/en-us/support/> for additional assistance.

TABLE OF CONTENTS

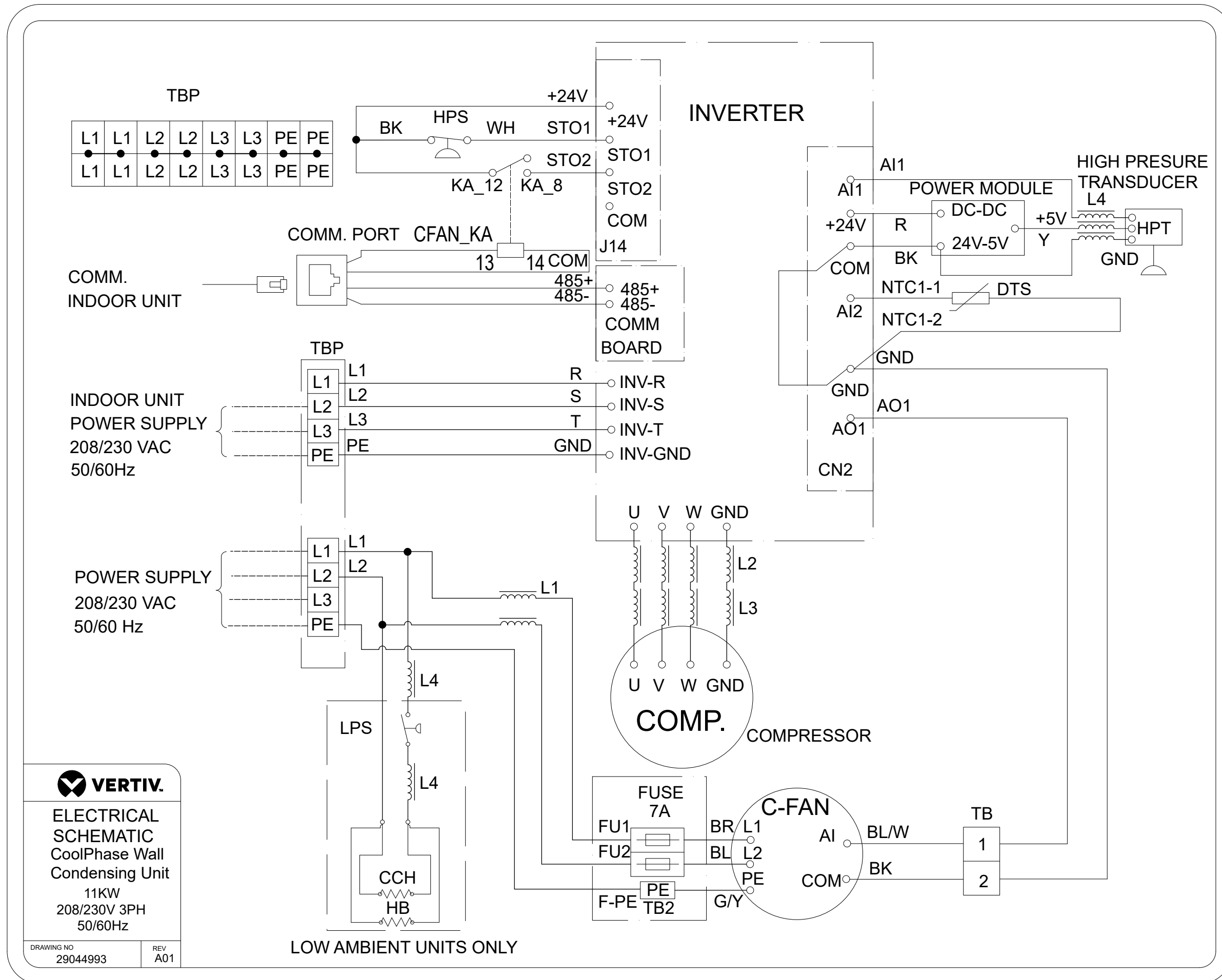
Appendix A: Submittal Drawings

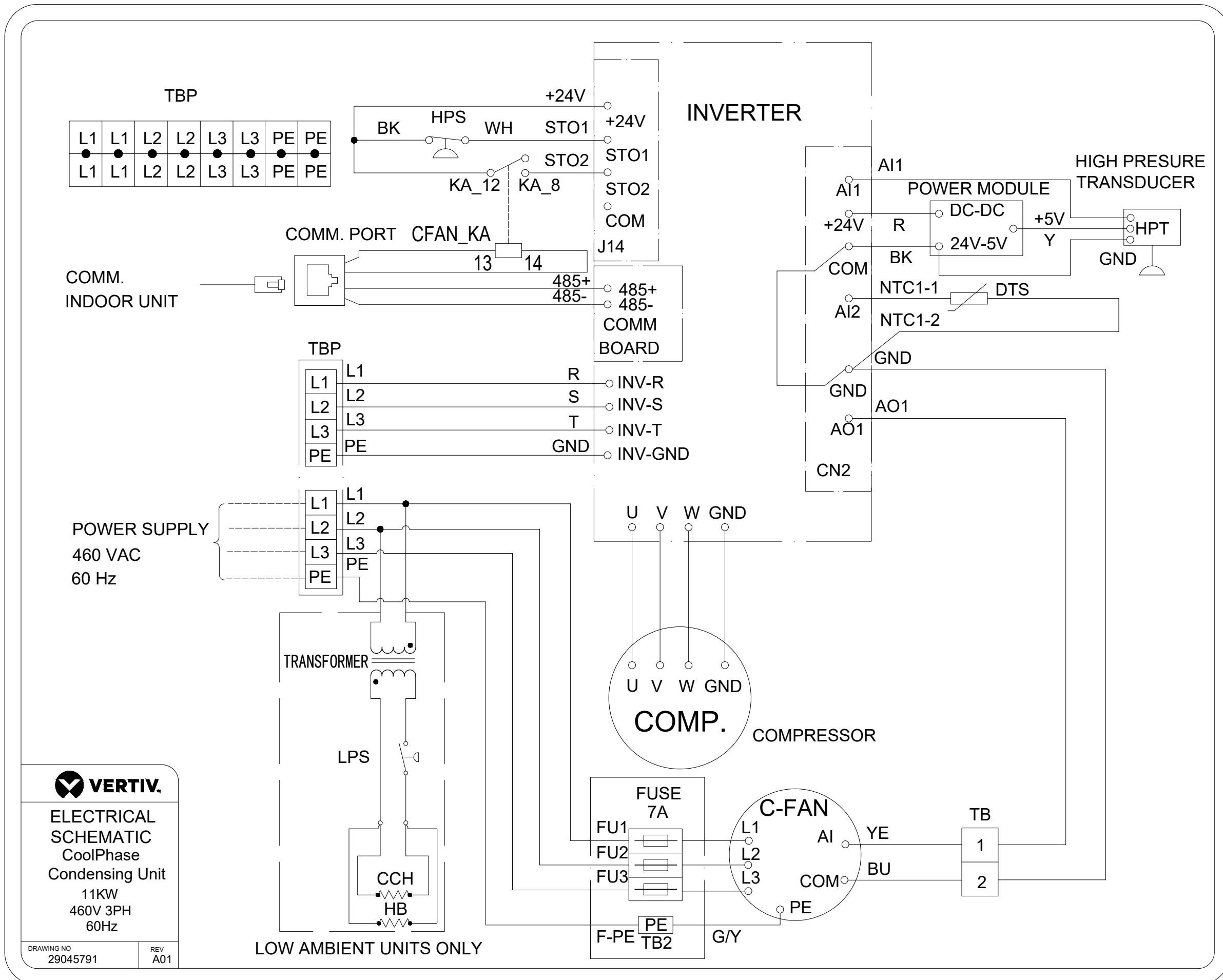
1. Electrical Schematic for 3.5 kW and 7 kW 208/230V, 1 Phase	4
2. Electrical Schematic for 11 kW 208/230V, 3 Phase	5
3. Electrical Schematic for 11 kW 460V, 3 Phase	6
4. Electrical Schematic for 15 kW 208/230V 3 Phase	8
5. Electrical Schematic for 15 kW 460V 3 Phase	10
6. Electrical Schematic for 21 kW 208/230V 3 Phase	12
7. Electrical Schematic for 21 kW 460V 3 Phase	14
8. Electrical Schematic for 28 kW 208/230V 3 Phase	16
9. Electrical Schematic for 28 kW 460V 3 Phase	18

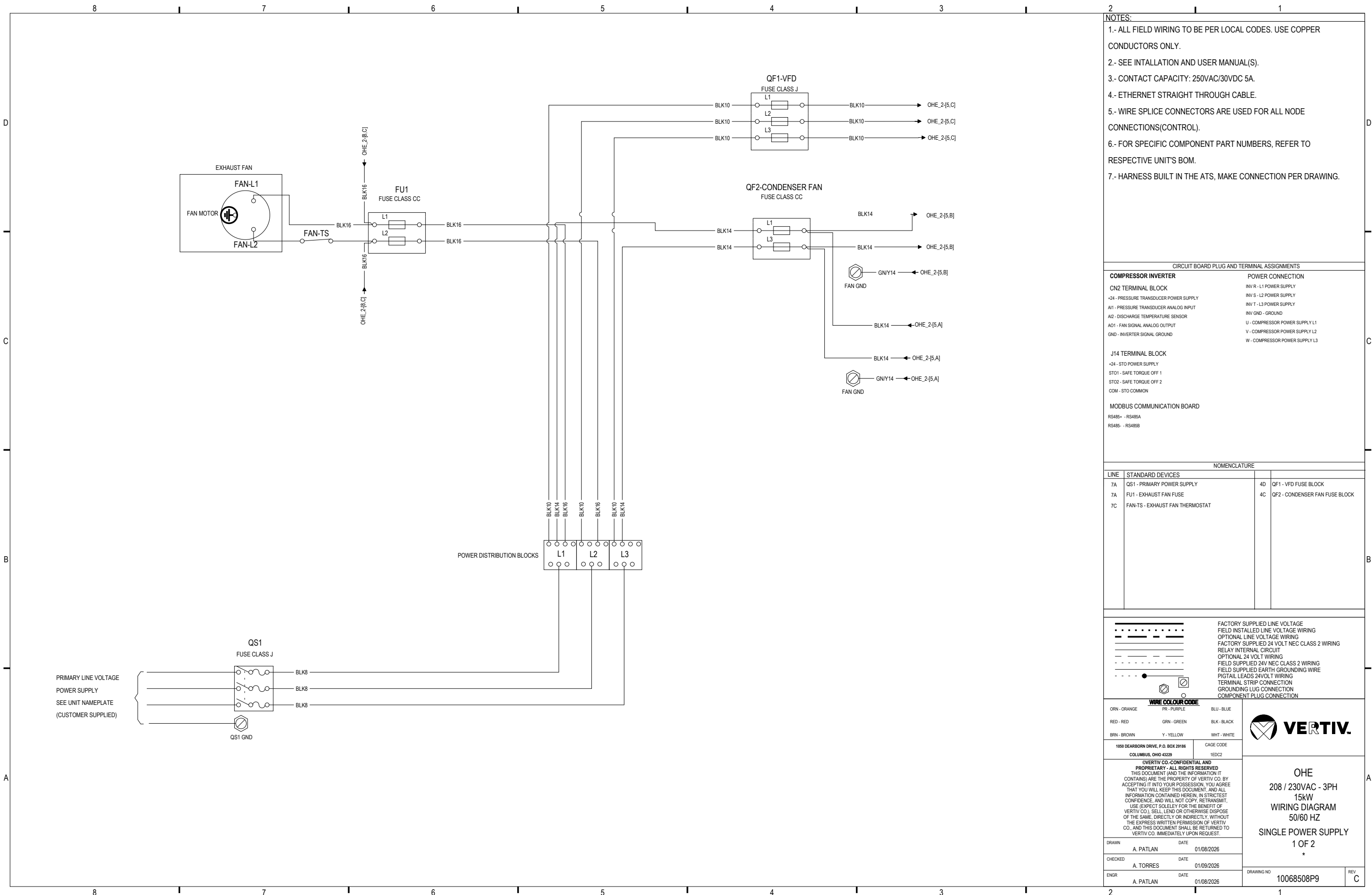


VERTIV.
ELECTRICAL SCHEMATIC
 CoolPhase Wall Condensing Unit
 3.5KW/7KW
 208/230V 1PH
 50/60Hz

DRAWING NO 29044991
 REV A01







- NOTES:**
- 1.- ALL FIELD WIRING TO BE PER LOCAL CODES. USE COPPER CONDUCTORS ONLY.
 - 2.- SEE INTALLATION AND USER MANUAL(S).
 - 3.- CONTACT CAPACITY: 250VAC/30VDC 5A.
 - 4.- ETHERNET STRAIGHT THROUGH CABLE.
 - 5.- WIRE SPLICE CONNECTORS ARE USED FOR ALL NODE CONNECTIONS(CONTROL).
 - 6.- FOR SPECIFIC COMPONENT PART NUMBERS, REFER TO RESPECTIVE UNITS BOM.
 - 7.- HARNESS BUILT IN THE ATS, MAKE CONNECTION PER DRAWING.

CIRCUIT BOARD PLUG AND TERMINAL ASSIGNMENTS

COMPRESSOR INVERTER	POWER CONNECTION
CN2 TERMINAL BLOCK	INV R - L1 POWER SUPPLY
+24 - PRESSURE TRANSDUCER POWER SUPPLY	INV S - L2 POWER SUPPLY
A11 - PRESSURE TRANSDUCER ANALOG INPUT	INV T - L3 POWER SUPPLY
A12 - DISCHARGE TEMPERATURE SENSOR	INV GND - GROUND
A01 - FAN SIGNAL ANALOG OUTPUT	U - COMPRESSOR POWER SUPPLY L1
GND - INVERTER SIGNAL GROUND	V - COMPRESSOR POWER SUPPLY L2
	W - COMPRESSOR POWER SUPPLY L3
J14 TERMINAL BLOCK	
+24 - STO POWER SUPPLY	
ST01 - SAFE TORQUE OFF 1	
ST02 - SAFE TORQUE OFF 2	
COM - STO COMMON	
MODBUS COMMUNICATION BOARD	
RS485+ - RS485A	
RS485- - RS485B	

NOMENCLATURE

LINE	STANDARD DEVICES	DESCRIPTION
7A	QS1 - PRIMARY POWER SUPPLY	4D QF1 - VFD FUSE BLOCK
7A	FU1 - EXHAUST FAN FUSE	4C QF2 - CONDENSER FAN FUSE BLOCK
7C	FAN-TS - EXHAUST FAN THERMOSTAT	

- - - - - FACTORY SUPPLIED LINE VOLTAGE
 FIELD INSTALLED LINE VOLTAGE WIRING
 - - - - - OPTIONAL LINE VOLTAGE WIRING
 - - - - - FACTORY SUPPLIED 24 VOLT NEC CLASS 2 WIRING
 - - - - - RELAY INTERNAL CIRCUIT
 - - - - - OPTIONAL 24 VOLT WIRING
 - - - - - FIELD SUPPLIED 24V NEC CLASS 2 WIRING
 - - - - - FIELD SUPPLIED EARTH GROUNDING WIRE
 - - - - - PIGTAIL LEADS 24VOLT WIRING
 - - - - - TERMINAL STRIP CONNECTION
 - - - - - GROUNDING LUG CONNECTION
 - - - - - COMPONENT PLUG CONNECTION

WIRE COLOUR CODE

ORN - ORANGE	PR - PURPLE	BLU - BLUE
RED - RED	GRN - GREEN	BLK - BLACK
BRN - BROWN	Y - YELLOW	WHT - WHITE

1050 DEARBORN DRIVE, P.O. BOX 29186
COLUMBUS, OHIO 43229

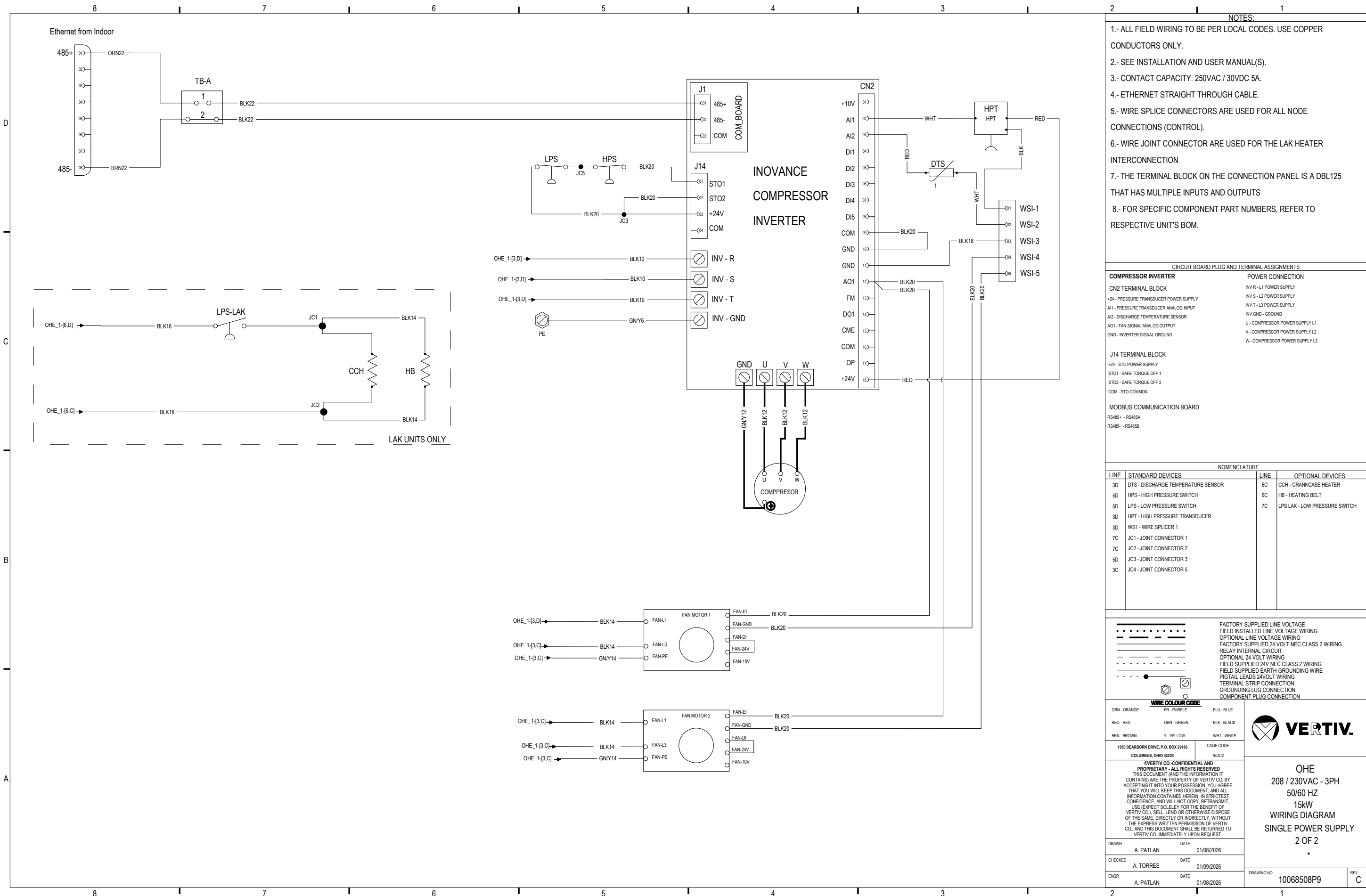
CAGE CODE
1EDC2

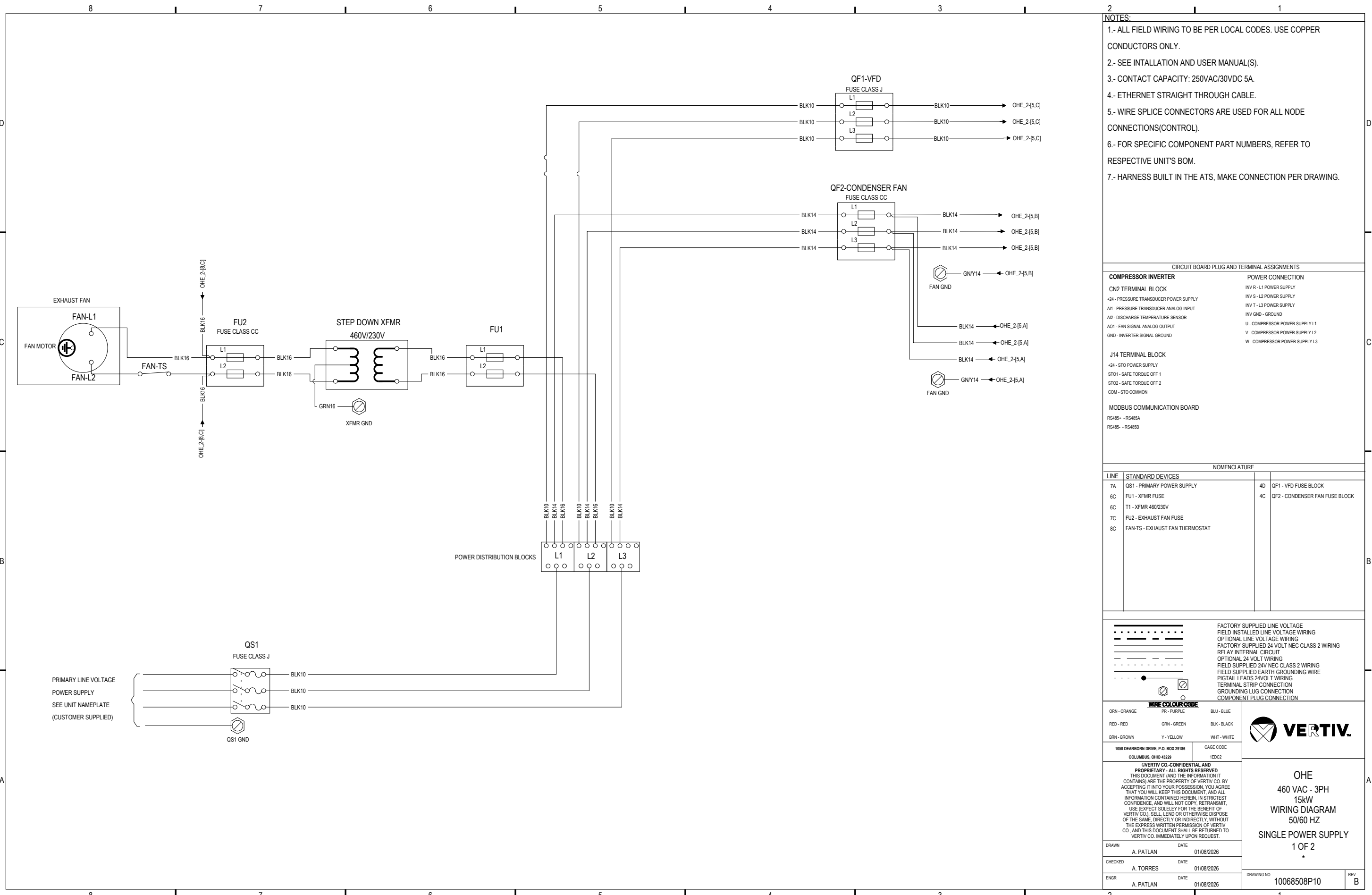
VERTIV.

OHE
208 / 230VAC - 3PH
15kW
WIRING DIAGRAM
50/60 HZ
SINGLE POWER SUPPLY
1 OF 2
*

DRAWN	A. PATLAN	DATE	01/08/2026
CHECKED	A. TORRES	DATE	01/09/2026
ENGR	A. PATLAN	DATE	01/08/2026

DRAWING NO 10068508P9 REV C





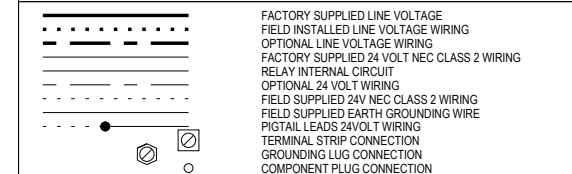
- NOTES:**
- 1.- ALL FIELD WIRING TO BE PER LOCAL CODES. USE COPPER CONDUCTORS ONLY.
 - 2.- SEE INTALLATION AND USER MANUAL(S).
 - 3.- CONTACT CAPACITY: 250VAC/30VDC 5A.
 - 4.- ETHERNET STRAIGHT THROUGH CABLE.
 - 5.- WIRE SPLICE CONNECTORS ARE USED FOR ALL NODE CONNECTIONS(CONTROL).
 - 6.- FOR SPECIFIC COMPONENT PART NUMBERS, REFER TO RESPECTIVE UNITS BOM.
 - 7.- HARNESS BUILT IN THE ATS, MAKE CONNECTION PER DRAWING.

CIRCUIT BOARD PLUG AND TERMINAL ASSIGNMENTS

COMPRESSOR INVERTER	POWER CONNECTION
CN2 TERMINAL BLOCK	INV R - L1 POWER SUPPLY
+24 - PRESSURE TRANSDUCER POWER SUPPLY	INV S - L2 POWER SUPPLY
A11 - PRESSURE TRANSDUCER ANALOG INPUT	INV T - L3 POWER SUPPLY
A12 - DISCHARGE TEMPERATURE SENSOR	INV GND - GROUND
A01 - FAN SIGNAL ANALOG OUTPUT	U - COMPRESSOR POWER SUPPLY L1
GND - INVERTER SIGNAL GROUND	V - COMPRESSOR POWER SUPPLY L2
	W - COMPRESSOR POWER SUPPLY L3
J14 TERMINAL BLOCK	
+24 - STO POWER SUPPLY	
ST01 - SAFE TORQUE OFF 1	
ST02 - SAFE TORQUE OFF 2	
COM - STO COMMON	
MODBUS COMMUNICATION BOARD	
RS485+ - RS485A	
RS485- - RS485B	

NOMENCLATURE

LINE	STANDARD DEVICES		
7A	QS1 - PRIMARY POWER SUPPLY	4D	QF1 - VFD FUSE BLOCK
6C	FU1 - XFMR FUSE	4C	QF2 - CONDENSER FAN FUSE BLOCK
6C	T1 - XFMR 460/230V		
7C	FU2 - EXHAUST FAN FUSE		
8C	FAN-TS - EXHAUST FAN THERMOSTAT		



WIRE COLOUR CODE

ORN - ORANGE	PR - PURPLE	BLU - BLUE
RED - RED	GRN - GREEN	BLK - BLACK
BRN - BROWN	Y - YELLOW	WHT - WHITE

1050 DEARBORN DRIVE, P.O. BOX 29186
COLUMBUS, OHIO 43229

CAGE CODE
1EDC2

VERTIV.

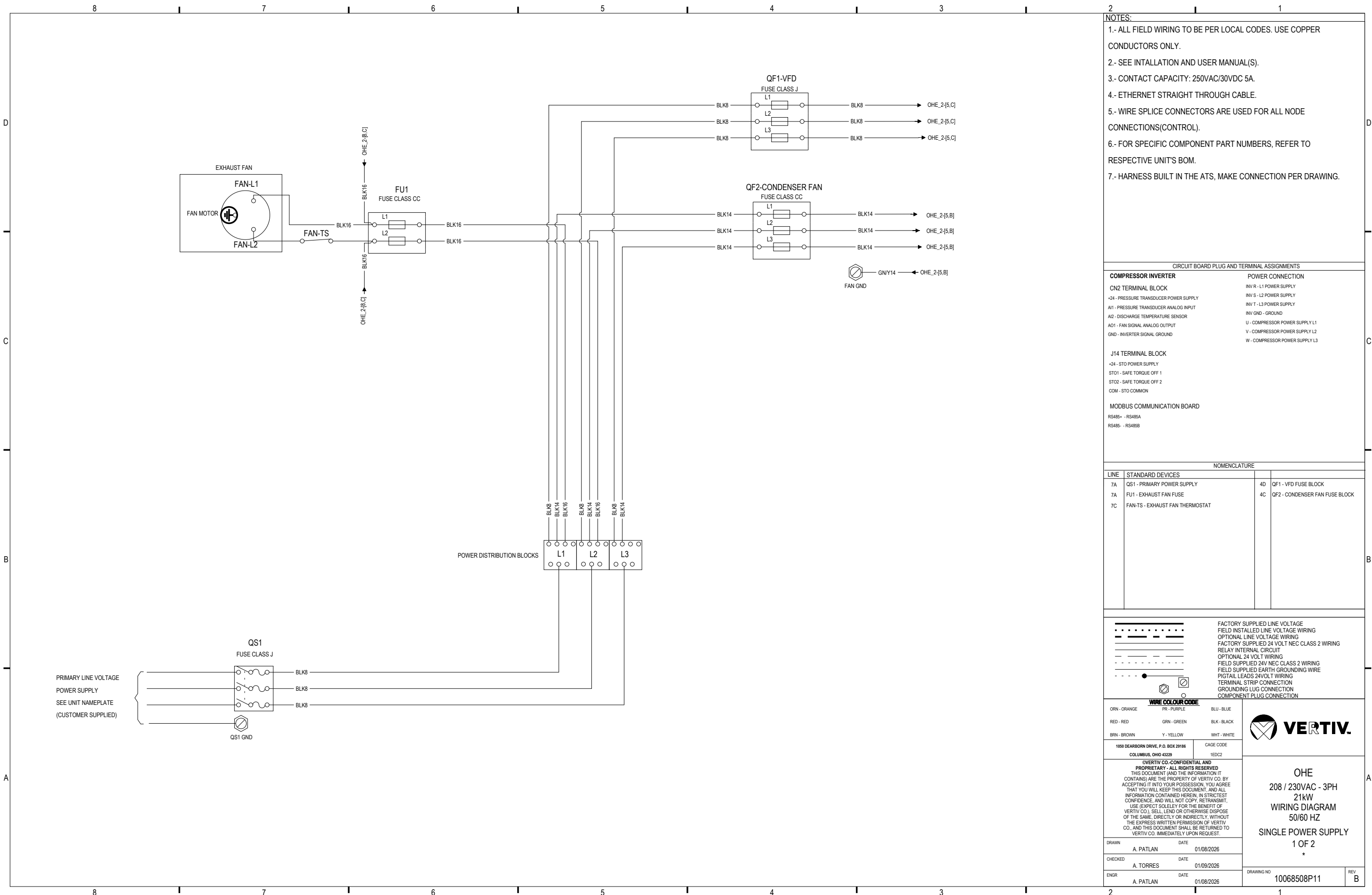
©VERTIV CO.-CONFIDENTIAL AND PROPRIETARY - ALL RIGHTS RESERVED
THIS DOCUMENT (AND THE INFORMATION IT CONTAINS) ARE THE PROPERTY OF VERTIV CO. BY ACCEPTING IT INTO YOUR POSSESSION, YOU AGREE THAT YOU WILL KEEP THIS DOCUMENT, AND ALL INFORMATION CONTAINED HEREIN, IN STRICTEST CONFIDENCE, AND WILL NOT COPY, RETRANSMIT, USE (EXPECT SOLELY FOR THE BENEFIT OF VERTIV CO.), SELL, LEND OR OTHERWISE DISPOSE OF THE SAME, DIRECTLY OR INDIRECTLY, WITHOUT THE EXPRESS WRITTEN PERMISSION OF VERTIV CO. AND THIS DOCUMENT SHALL BE RETURNED TO VERTIV CO. IMMEDIATELY UPON REQUEST.

OHE
460 VAC - 3PH
15kW
WIRING DIAGRAM
50/60 HZ
SINGLE POWER SUPPLY
1 OF 2
*

DRAWN	A. PATLAN	DATE	01/08/2026
CHECKED	A. TORRES	DATE	01/08/2026
ENGR	A. PATLAN	DATE	01/08/2026

DRAWING NO
10068508P10

REV
B



- NOTES:**
- 1.- ALL FIELD WIRING TO BE PER LOCAL CODES. USE COPPER CONDUCTORS ONLY.
 - 2.- SEE INTALLATION AND USER MANUAL(S).
 - 3.- CONTACT CAPACITY: 250VAC/30VDC 5A.
 - 4.- ETHERNET STRAIGHT THROUGH CABLE.
 - 5.- WIRE SPLICE CONNECTORS ARE USED FOR ALL NODE CONNECTIONS(CONTROL).
 - 6.- FOR SPECIFIC COMPONENT PART NUMBERS, REFER TO RESPECTIVE UNITS BOM.
 - 7.- HARNESS BUILT IN THE ATS, MAKE CONNECTION PER DRAWING.

CIRCUIT BOARD PLUG AND TERMINAL ASSIGNMENTS

COMPRESSOR INVERTER	POWER CONNECTION
CN2 TERMINAL BLOCK	INV R - L1 POWER SUPPLY
+24 - PRESSURE TRANSDUCER POWER SUPPLY	INV S - L2 POWER SUPPLY
A11 - PRESSURE TRANSDUCER ANALOG INPUT	INV T - L3 POWER SUPPLY
A12 - DISCHARGE TEMPERATURE SENSOR	INV GND - GROUND
A01 - FAN SIGNAL ANALOG OUTPUT	U - COMPRESSOR POWER SUPPLY L1
GND - INVERTER SIGNAL GROUND	V - COMPRESSOR POWER SUPPLY L2
	W - COMPRESSOR POWER SUPPLY L3

J14 TERMINAL BLOCK
+24 - STO POWER SUPPLY
ST01 - SAFE TORQUE OFF 1
ST02 - SAFE TORQUE OFF 2
COM - STO COMMON

MODBUS COMMUNICATION BOARD
RS485+ - RS485A
RS485- - RS485B

NOMENCLATURE

LINE	STANDARD DEVICES	4D	4C
7A	QS1 - PRIMARY POWER SUPPLY		4D QF1 - VFD FUSE BLOCK
7A	FU1 - EXHAUST FAN FUSE		4C QF2 - CONDENSER FAN FUSE BLOCK
7C	FAN-TS - EXHAUST FAN THERMOSTAT		

- - - - - FACTORY SUPPLIED LINE VOLTAGE
 FIELD INSTALLED LINE VOLTAGE WIRING
 - - - - - OPTIONAL LINE VOLTAGE WIRING
 - - - - - FACTORY SUPPLIED 24 VOLT NEC CLASS 2 WIRING
 - - - - - RELAY INTERNAL CIRCUIT
 - - - - - OPTIONAL 24 VOLT WIRING
 - - - - - FIELD SUPPLIED 24V NEC CLASS 2 WIRING
 - - - - - FIELD SUPPLIED EARTH GROUNDING WIRE
 - - - - - PIGTAIL LEADS 24VOLT WIRING
 TERMINAL STRIP CONNECTION
 GROUNDING LUG CONNECTION
 COMPONENT PLUG CONNECTION

WIRE COLOUR CODE

ORN - ORANGE	PR - PURPLE	BLU - BLUE
RED - RED	GRN - GREEN	BLK - BLACK
BRN - BROWN	Y - YELLOW	WHT - WHITE

1050 DEARBORN DRIVE, P.O. BOX 29186
COLUMBUS, OHIO 43229

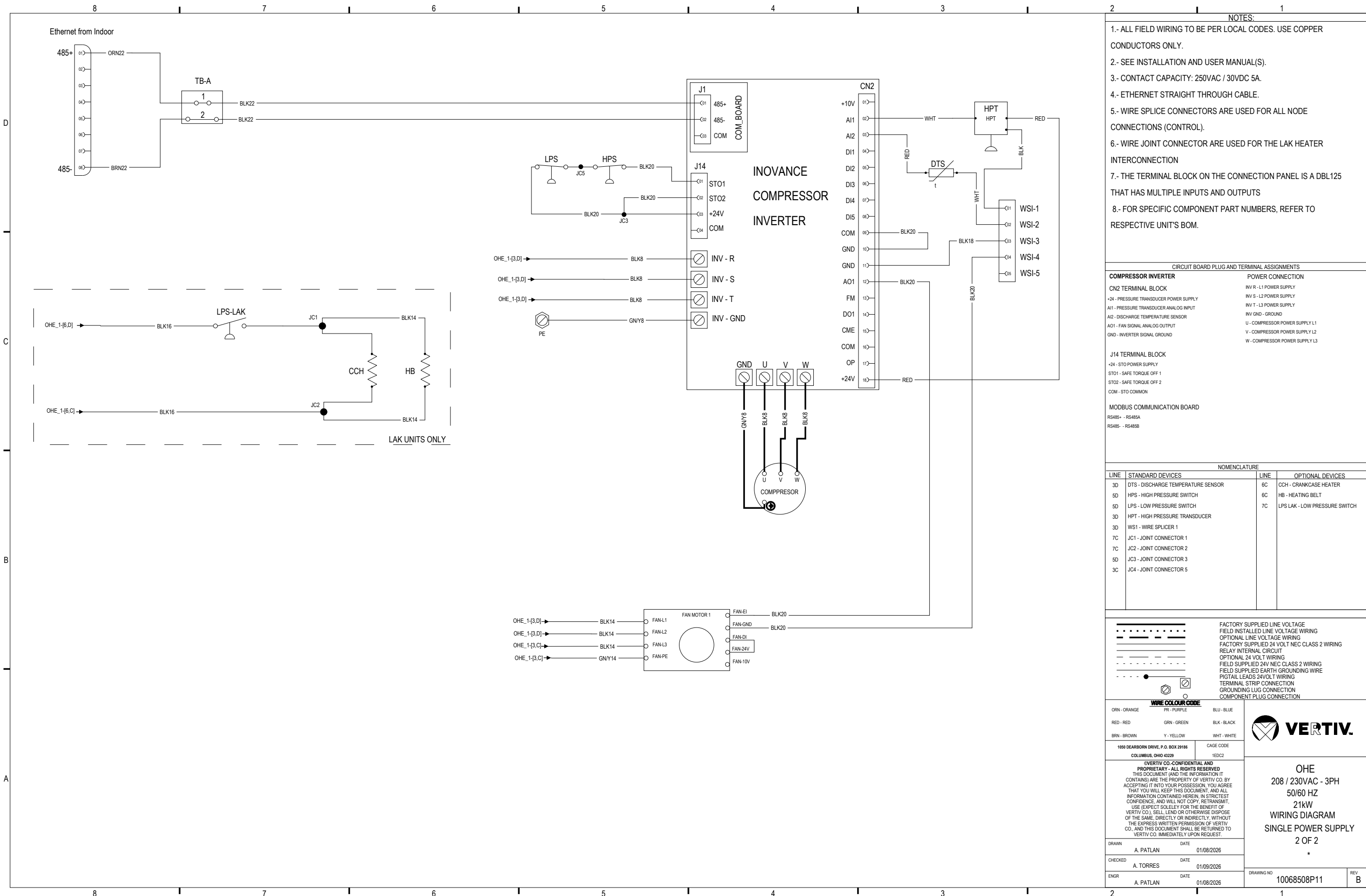
CAGE CODE
1EDC2

VERTIV.

OHE
208 / 230VAC - 3PH
21kW
WIRING DIAGRAM
50/60 HZ
SINGLE POWER SUPPLY
1 OF 2
*

DRAWN	DATE
A. PATLAN	01/08/2026
CHECKED	DATE
A. TORRES	01/09/2026
ENGR	DATE
A. PATLAN	01/08/2026

DRAWING NO 10068508P11 REV B



- NOTES:**
- 1.- ALL FIELD WIRING TO BE PER LOCAL CODES. USE COPPER CONDUCTORS ONLY.
 - 2.- SEE INSTALLATION AND USER MANUAL(S).
 - 3.- CONTACT CAPACITY: 250VAC / 30VDC 5A.
 - 4.- ETHERNET STRAIGHT THROUGH CABLE.
 - 5.- WIRE SPLICE CONNECTORS ARE USED FOR ALL NODE CONNECTIONS (CONTROL).
 - 6.- WIRE JOINT CONNECTOR ARE USED FOR THE LAK HEATER INTERCONNECTION
 - 7.- THE TERMINAL BLOCK ON THE CONNECTION PANEL IS A DBL125 THAT HAS MULTIPLE INPUTS AND OUTPUTS
 - 8.- FOR SPECIFIC COMPONENT PART NUMBERS, REFER TO RESPECTIVE UNIT'S BOM.

CIRCUIT BOARD PLUG AND TERMINAL ASSIGNMENTS

COMPRESSOR INVERTER	POWER CONNECTION
CN2 TERMINAL BLOCK	INV R - L1 POWER SUPPLY
+24 - PRESSURE TRANSDUCER POWER SUPPLY	INV S - L2 POWER SUPPLY
AI1 - PRESSURE TRANSDUCER ANALOG INPUT	INV T - L3 POWER SUPPLY
AI2 - DISCHARGE TEMPERATURE SENSOR	INV GND - GROUND
AO1 - FAN SIGNAL ANALOG OUTPUT	U - COMPRESSOR POWER SUPPLY L1
GND - INVERTER SIGNAL GROUND	V - COMPRESSOR POWER SUPPLY L2
	W - COMPRESSOR POWER SUPPLY L3

J14 TERMINAL BLOCK

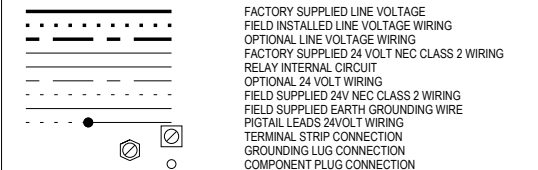
+24 - STO POWER SUPPLY
STO1 - SAFE TORQUE OFF 1
STO2 - SAFE TORQUE OFF 2
COM - STO COMMON

MODBUS COMMUNICATION BOARD

RS485+ - RS485A
RS485- - RS485B

NOMENCLATURE

LINE	STANDARD DEVICES	LINE	OPTIONAL DEVICES
3D	DTS - DISCHARGE TEMPERATURE SENSOR	6C	CCH - CRANKCASE HEATER
5D	HPS - HIGH PRESSURE SWITCH	6C	HB - HEATING BELT
5D	LPS - LOW PRESSURE SWITCH	7C	LPS LAK - LOW PRESSURE SWITCH
3D	HPT - HIGH PRESSURE TRANSDUCER		
3D	WS1 - WIRE SPLICER 1		
7C	JC1 - JOINT CONNECTOR 1		
7C	JC2 - JOINT CONNECTOR 2		
5D	JC3 - JOINT CONNECTOR 3		
3C	JC4 - JOINT CONNECTOR 5		



WIRE COLOUR CODE

ORN - ORANGE	PR - PURPLE	BLU - BLUE
RED - RED	GRN - GREEN	BLK - BLACK
BRN - BROWN	Y - YELLOW	WHT - WHITE

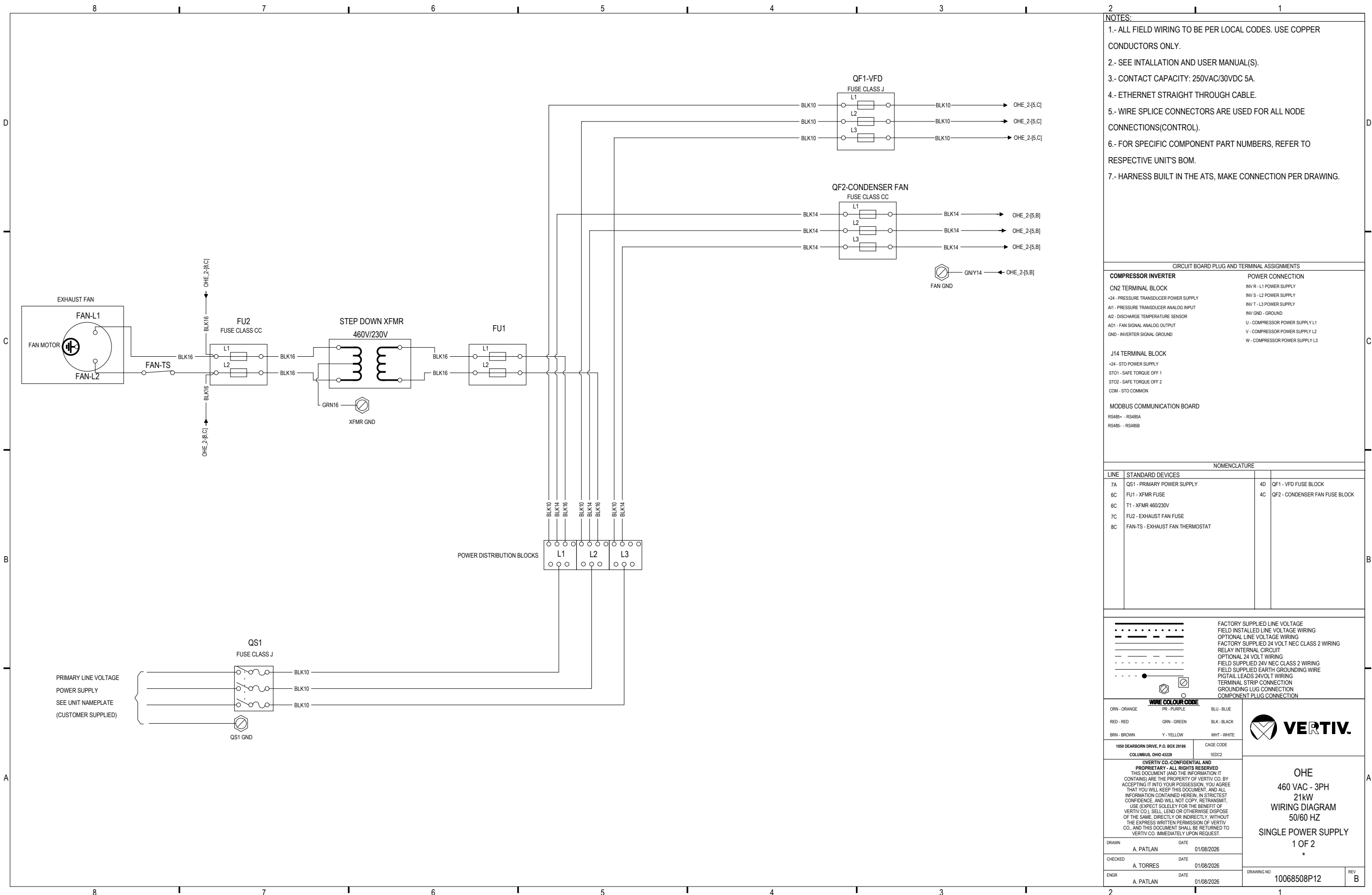


1050 DEARBORN DRIVE, P.O. BOX 29186
COLUMBUS, OHIO 43229

OHE
208 / 230VAC - 3PH
50/60 HZ
21kW
WIRING DIAGRAM
2 OF 2

DRAWN	DATE
A. PATLAN	01/08/2026
CHECKED	DATE
A. TORRES	01/09/2026
ENGR	DATE
A. PATLAN	01/08/2026

DRAWING NO 10068508P11
REV B



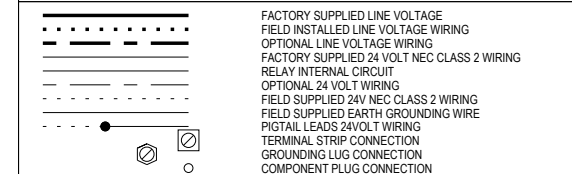
- NOTES:**
- 1.- ALL FIELD WIRING TO BE PER LOCAL CODES. USE COPPER CONDUCTORS ONLY.
 - 2.- SEE INTALLATION AND USER MANUAL(S).
 - 3.- CONTACT CAPACITY: 250VAC/30VDC 5A.
 - 4.- ETHERNET STRAIGHT THROUGH CABLE.
 - 5.- WIRE SPLICE CONNECTORS ARE USED FOR ALL NODE CONNECTIONS(CONTROL).
 - 6.- FOR SPECIFIC COMPONENT PART NUMBERS, REFER TO RESPECTIVE UNITS BOM.
 - 7.- HARNESS BUILT IN THE ATS, MAKE CONNECTION PER DRAWING.

CIRCUIT BOARD PLUG AND TERMINAL ASSIGNMENTS

COMPRESSOR INVERTER	POWER CONNECTION
CN2 TERMINAL BLOCK	INV R - L1 POWER SUPPLY
+24 - PRESSURE TRANSDUCER POWER SUPPLY	INV S - L2 POWER SUPPLY
A11 - PRESSURE TRANSDUCER ANALOG INPUT	INV T - L3 POWER SUPPLY
A12 - DISCHARGE TEMPERATURE SENSOR	INV GND - GROUND
A01 - FAN SIGNAL ANALOG OUTPUT	U - COMPRESSOR POWER SUPPLY L1
GND - INVERTER SIGNAL GROUND	V - COMPRESSOR POWER SUPPLY L2
	W - COMPRESSOR POWER SUPPLY L3
J14 TERMINAL BLOCK	
+24 - STO POWER SUPPLY	
ST01 - SAFE TORQUE OFF 1	
ST02 - SAFE TORQUE OFF 2	
COM - STO COMMON	
MODBUS COMMUNICATION BOARD	
RS485+ - RS485A	
RS485- - RS485B	

NOMENCLATURE

LINE	STANDARD DEVICES	4D	4C
7A	QS1 - PRIMARY POWER SUPPLY		QF1 - VFD FUSE BLOCK
6C	FU1 - XFMR FUSE		QF2 - CONDENSER FAN FUSE BLOCK
6C	T1 - XFMR 460/230V		
7C	FU2 - EXHAUST FAN FUSE		
8C	FAN-TS - EXHAUST FAN THERMOSTAT		



1050 DEARBORN DRIVE, P.O. BOX 29186
COLUMBUS, OHIO 43229

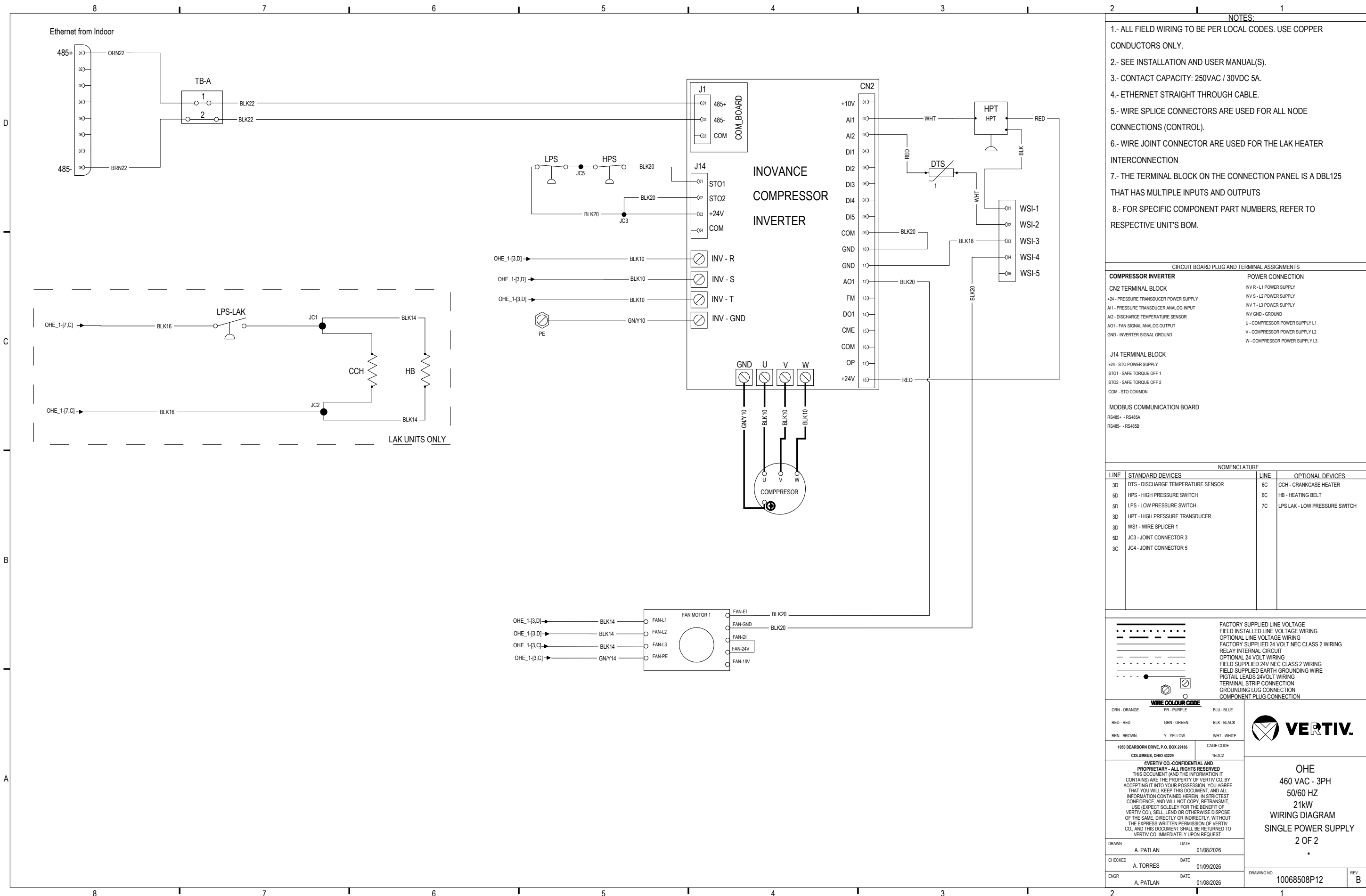
CAGE CODE
1EDC2

VERTIV

OHE
460 VAC - 3PH
21kW
WIRING DIAGRAM
50/60 HZ
SINGLE POWER SUPPLY
1 OF 2
*

DRAWN: A. PATLAN DATE: 01/08/2026
CHECKED: A. TORRES DATE: 01/08/2026
ENGR: A. PATLAN DATE: 01/08/2026

DRAWING NO: 10068508P12 REV: B



- NOTES:**
- 1.- ALL FIELD WIRING TO BE PER LOCAL CODES. USE COPPER CONDUCTORS ONLY.
 - 2.- SEE INSTALLATION AND USER MANUAL(S).
 - 3.- CONTACT CAPACITY: 250VAC / 30VDC 5A.
 - 4.- ETHERNET STRAIGHT THROUGH CABLE.
 - 5.- WIRE SPLICE CONNECTORS ARE USED FOR ALL NODE CONNECTIONS (CONTROL).
 - 6.- WIRE JOINT CONNECTOR ARE USED FOR THE LAK HEATER INTERCONNECTION
 - 7.- THE TERMINAL BLOCK ON THE CONNECTION PANEL IS A DBL125 THAT HAS MULTIPLE INPUTS AND OUTPUTS
 - 8.- FOR SPECIFIC COMPONENT PART NUMBERS, REFER TO RESPECTIVE UNIT'S BOM.

CIRCUIT BOARD PLUG AND TERMINAL ASSIGNMENTS

COMPRESSOR INVERTER	POWER CONNECTION
CN2 TERMINAL BLOCK	INV R - L1 POWER SUPPLY
+24 - PRESSURE TRANSDUCER POWER SUPPLY	INV S - L2 POWER SUPPLY
AI1 - PRESSURE TRANSDUCER ANALOG INPUT	INV T - L3 POWER SUPPLY
AI2 - DISCHARGE TEMPERATURE SENSOR	INV GND - GROUND
AO1 - FAN SIGNAL ANALOG OUTPUT	U - COMPRESSOR POWER SUPPLY L1
GND - INVERTER SIGNAL GROUND	V - COMPRESSOR POWER SUPPLY L2
	W - COMPRESSOR POWER SUPPLY L3

J14 TERMINAL BLOCK

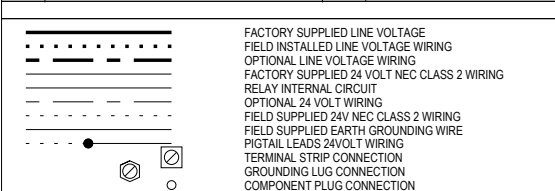
+24 - STO POWER SUPPLY
STO1 - SAFE TORQUE OFF 1
STO2 - SAFE TORQUE OFF 2
COM - STO COMMON

MODBUS COMMUNICATION BOARD

RS485+ - RS485A
RS485- - RS485B

NOMENCLATURE

LINE	STANDARD DEVICES	LINE	OPTIONAL DEVICES
3D	DTS - DISCHARGE TEMPERATURE SENSOR	6C	CCH - CRANKCASE HEATER
5D	HPS - HIGH PRESSURE SWITCH	6C	HB - HEATING BELT
5D	LPS - LOW PRESSURE SWITCH	7C	LPS LAK - LOW PRESSURE SWITCH
3D	HPT - HIGH PRESSURE TRANSDUCER		
3D	WS1 - WIRE SPLICER 1		
5D	JC3 - JOINT CONNECTOR 3		
3C	JC4 - JOINT CONNECTOR 5		



WIRE COLOUR CODE

ORN - ORANGE	PR - PURPLE	BLU - BLUE
RED - RED	GRN - GREEN	BLK - BLACK
BRN - BROWN	Y - YELLOW	WHT - WHITE

1050 DEARBORN DRIVE, P.O. BOX 29186
COLUMBUS, OHIO 43229

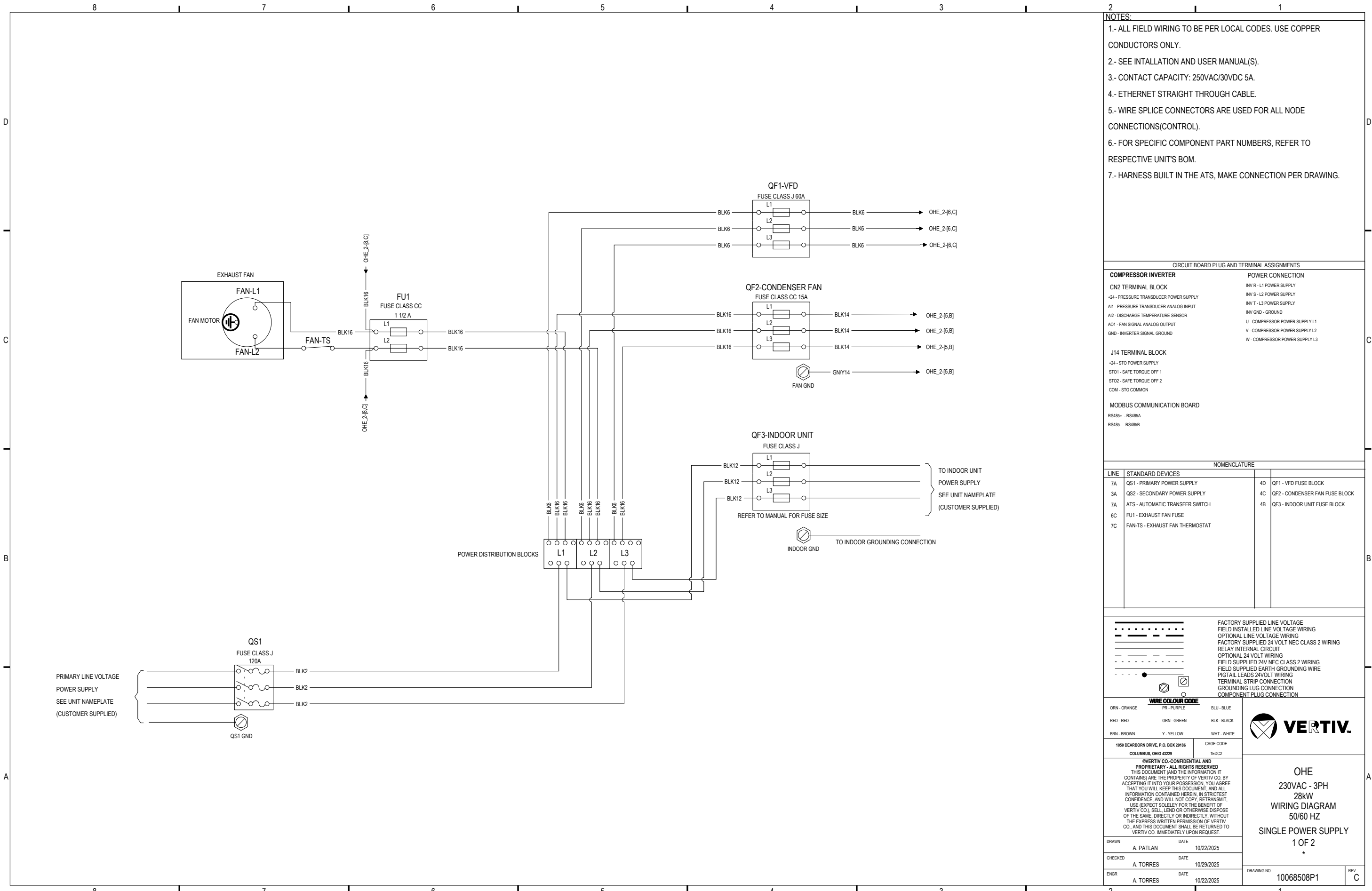
CAGE CODE
1EDC2

VERTIV.

OHE
460 VAC - 3PH
50/60 HZ
21kW
WIRING DIAGRAM
2 OF 2

DRAWN: A. PATLAN DATE: 01/08/2026
CHECKED: A. TORRES DATE: 01/09/2026
ENGR: A. PATLAN DATE: 01/08/2026

DRAWING NO: 10068508P12
REV: B



- NOTES:**
- 1.- ALL FIELD WIRING TO BE PER LOCAL CODES. USE COPPER CONDUCTORS ONLY.
 - 2.- SEE INTALLATION AND USER MANUAL(S).
 - 3.- CONTACT CAPACITY: 250VAC/30VDC 5A.
 - 4.- ETHERNET STRAIGHT THROUGH CABLE.
 - 5.- WIRE SPLICE CONNECTORS ARE USED FOR ALL NODE CONNECTIONS(CONTROL).
 - 6.- FOR SPECIFIC COMPONENT PART NUMBERS, REFER TO RESPECTIVE UNITS BOM.
 - 7.- HARNESS BUILT IN THE ATS, MAKE CONNECTION PER DRAWING.

CIRCUIT BOARD PLUG AND TERMINAL ASSIGNMENTS

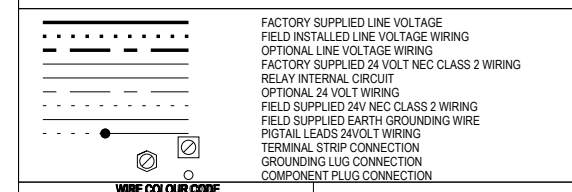
COMPRESSOR INVERTER	POWER CONNECTION
CN2 TERMINAL BLOCK	INV R - L1 POWER SUPPLY
+24 - PRESSURE TRANSDUCER POWER SUPPLY	INV S - L2 POWER SUPPLY
A11 - PRESSURE TRANSDUCER ANALOG INPUT	INV T - L3 POWER SUPPLY
A12 - DISCHARGE TEMPERATURE SENSOR	INV GND - GROUND
A01 - FAN SIGNAL ANALOG OUTPUT	U - COMPRESSOR POWER SUPPLY L1
GND - INVERTER SIGNAL GROUND	V - COMPRESSOR POWER SUPPLY L2
	W - COMPRESSOR POWER SUPPLY L3

J14 TERMINAL BLOCK
+24 - STO POWER SUPPLY
ST01 - SAFE TORQUE OFF 1
ST02 - SAFE TORQUE OFF 2
COM - STO COMMON

MODBUS COMMUNICATION BOARD
RS485+ - RS485A
RS485- - RS485B

NOMENCLATURE

LINE	STANDARD DEVICES	
7A	QS1 - PRIMARY POWER SUPPLY	4D QF1 - VFD FUSE BLOCK
3A	QS2 - SECONDARY POWER SUPPLY	4C QF2 - CONDENSER FAN FUSE BLOCK
7A	ATS - AUTOMATIC TRANSFER SWITCH	4B QF3 - INDOOR UNIT FUSE BLOCK
6C	FU1 - EXHAUST FAN FUSE	
7C	FAN-TS - EXHAUST FAN THERMOSTAT	



WIRE COLOUR CODE

ORN - ORANGE	PR - PURPLE	BLU - BLUE
RED - RED	GRN - GREEN	BLK - BLACK
BRN - BROWN	Y - YELLOW	WHT - WHITE

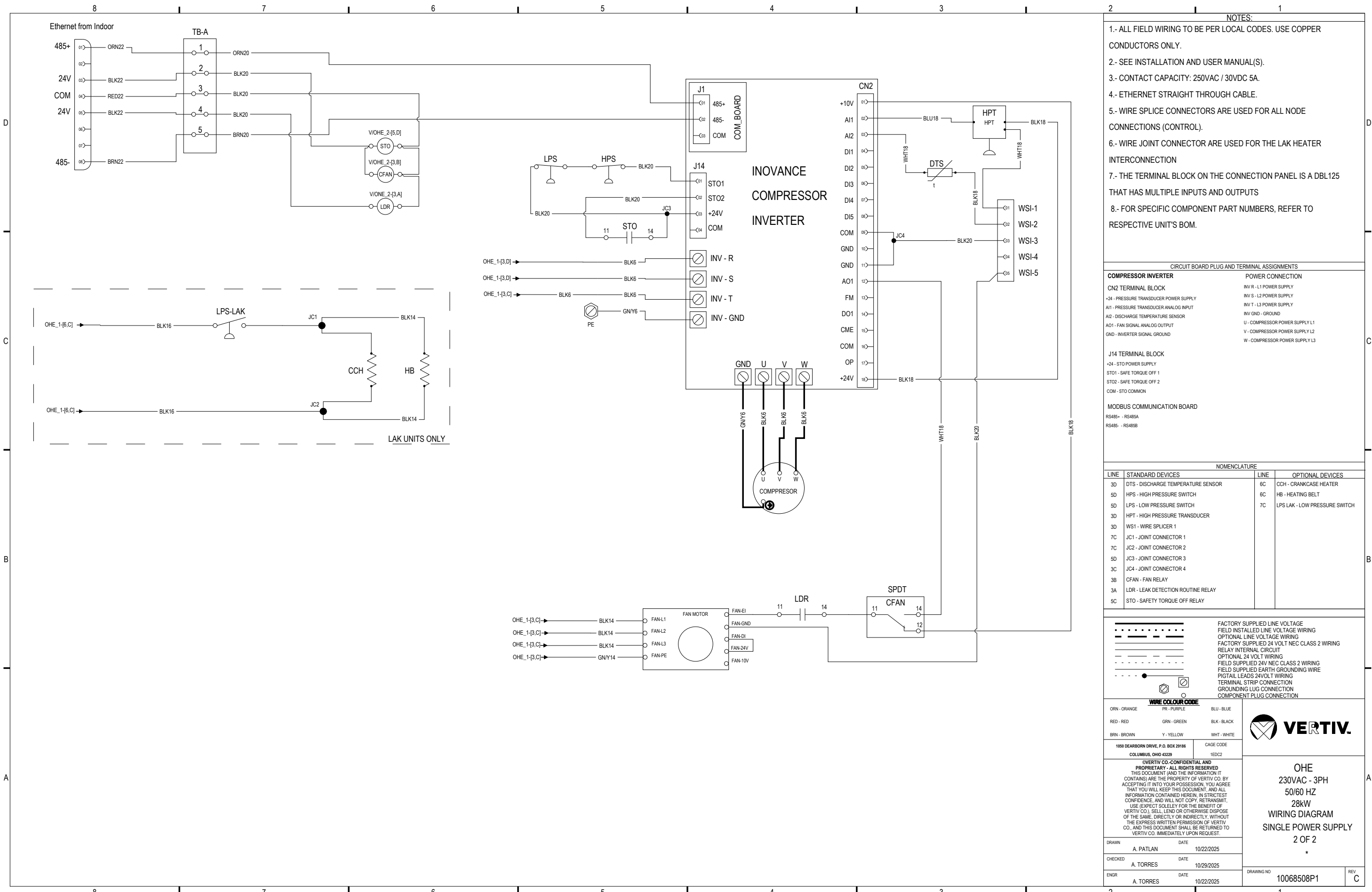
1050 DEARBORN DRIVE, P.O. BOX 29186
 COLUMBUS, OHIO 43229

VERTIV.

OHE
 230VAC - 3PH
 28kW
 WIRING DIAGRAM
 50/60 HZ
 SINGLE POWER SUPPLY
 1 OF 2
 *

DRAWN	DATE
A. PATLAN	10/22/2025
CHECKED	DATE
A. TORRES	10/29/2025
ENGR	DATE
A. TORRES	10/22/2025

DRAWING NO: 10068508P1
 REV: C



- NOTES:**
- 1.- ALL FIELD WIRING TO BE PER LOCAL CODES. USE COPPER CONDUCTORS ONLY.
 - 2.- SEE INSTALLATION AND USER MANUAL(S).
 - 3.- CONTACT CAPACITY: 250VAC / 30VDC 5A.
 - 4.- ETHERNET STRAIGHT THROUGH CABLE.
 - 5.- WIRE SPLICE CONNECTORS ARE USED FOR ALL NODE CONNECTIONS (CONTROL).
 - 6.- WIRE JOINT CONNECTOR ARE USED FOR THE LAK HEATER INTERCONNECTION
 - 7.- THE TERMINAL BLOCK ON THE CONNECTION PANEL IS A DBL125 THAT HAS MULTIPLE INPUTS AND OUTPUTS
 - 8.- FOR SPECIFIC COMPONENT PART NUMBERS, REFER TO RESPECTIVE UNIT'S BOM.

CIRCUIT BOARD PLUG AND TERMINAL ASSIGNMENTS

COMPRESSOR INVERTER	POWER CONNECTION
CN2 TERMINAL BLOCK	INV R - L1 POWER SUPPLY
+24 - PRESSURE TRANSDUCER POWER SUPPLY	INV S - L2 POWER SUPPLY
AI1 - PRESSURE TRANSDUCER ANALOG INPUT	INV T - L3 POWER SUPPLY
AI2 - DISCHARGE TEMPERATURE SENSOR	INV GND - GROUND
AO1 - FAN SIGNAL ANALOG OUTPUT	U - COMPRESSOR POWER SUPPLY L1
GND - INVERTER SIGNAL GROUND	V - COMPRESSOR POWER SUPPLY L2
	W - COMPRESSOR POWER SUPPLY L3

J14 TERMINAL BLOCK

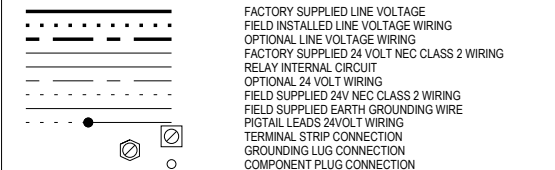
+24 - STO POWER SUPPLY
STO1 - SAFE TORQUE OFF 1
STO2 - SAFE TORQUE OFF 2
COM - STO COMMON

MODBUS COMMUNICATION BOARD

RS485+ - RS485A
RS485- - RS485B

NOMENCLATURE

LINE	STANDARD DEVICES	LINE	OPTIONAL DEVICES
3D	DTS - DISCHARGE TEMPERATURE SENSOR	6C	CCH - CRANKCASE HEATER
5D	HPS - HIGH PRESSURE SWITCH	6C	HB - HEATING BELT
5D	LPS - LOW PRESSURE SWITCH	7C	LPS LAK - LOW PRESSURE SWITCH
3D	HPT - HIGH PRESSURE TRANSDUCER		
3D	WS1 - WIRE SPLICER 1		
7C	JC1 - JOINT CONNECTOR 1		
7C	JC2 - JOINT CONNECTOR 2		
5D	JC3 - JOINT CONNECTOR 3		
3C	JC4 - JOINT CONNECTOR 4		
3B	CFAN - FAN RELAY		
3A	LDR - LEAK DETECTION ROUTINE RELAY		
5C	STO - SAFETY TORQUE OFF RELAY		



WIRE COLOUR CODE

ORN - ORANGE	PR - PURPLE	BLU - BLUE
RED - RED	GRN - GREEN	BLK - BLACK
BRN - BROWN	Y - YELLOW	WHT - WHITE

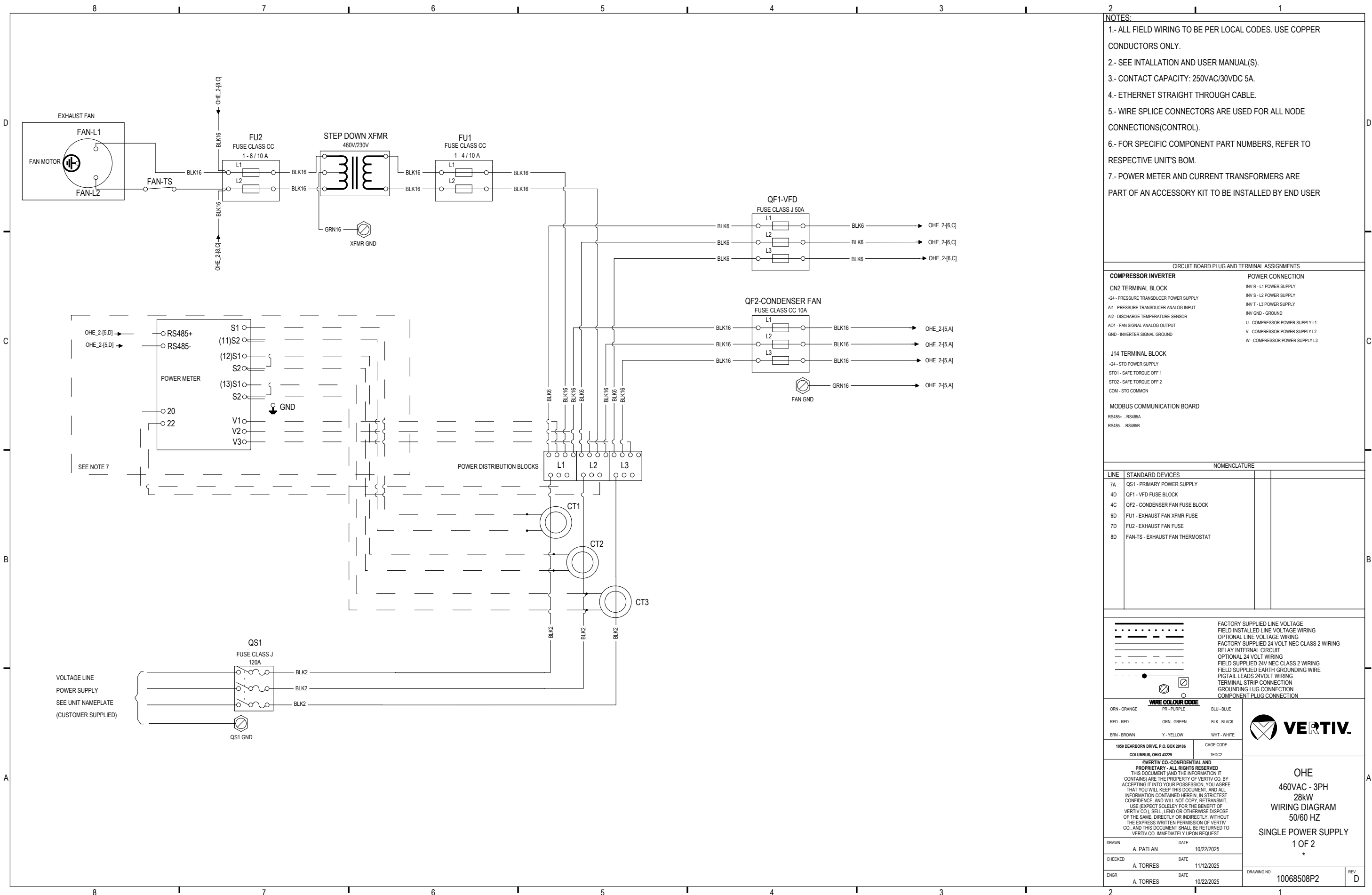
1050 DEARBORN DRIVE, P.O. BOX 29186 COLUMBUS, OHIO 43229
 CAGE CODE 1EDC2

VERTIV CO. CONFIDENTIAL AND PROPRIETARY - ALL RIGHTS RESERVED
 THIS DOCUMENT (AND THE INFORMATION IT CONTAINS) ARE THE PROPERTY OF VERTIV CO. BY ACCEPTING IT INTO YOUR POSSESSION, YOU AGREE THAT YOU WILL KEEP THIS DOCUMENT, AND ALL INFORMATION CONTAINED HEREIN, IN STRICTEST CONFIDENCE, AND WILL NOT COPY, RE TRANSMIT, USE (EXPECT SOLELY FOR THE BENEFIT OF VERTIV CO.), SELL, LEND OR OTHERWISE DISPOSE OF THE SAME, DIRECTLY OR INDIRECTLY, WITHOUT THE EXPRESS WRITTEN PERMISSION OF VERTIV CO. AND THIS DOCUMENT SHALL BE RETURNED TO VERTIV CO. IMMEDIATELY UPON REQUEST.

OHE
 230VAC - 3PH
 50/60 HZ
 28kW
 WIRING DIAGRAM
 SINGLE POWER SUPPLY
 2 OF 2
 *

DRAWN	A. PATLAN	DATE	10/22/2025
CHECKED	A. TORRES	DATE	10/29/2025
ENGR	A. TORRES	DATE	10/22/2025

DRAWING NO: 10068508P1 REV: C



- NOTES:**
- 1.- ALL FIELD WIRING TO BE PER LOCAL CODES. USE COPPER CONDUCTORS ONLY.
 - 2.- SEE INTALLATION AND USER MANUAL(S).
 - 3.- CONTACT CAPACITY: 250VAC/30VDC 5A.
 - 4.- ETHERNET STRAIGHT THROUGH CABLE.
 - 5.- WIRE SPLICE CONNECTORS ARE USED FOR ALL NODE CONNECTIONS(CONTROL).
 - 6.- FOR SPECIFIC COMPONENT PART NUMBERS, REFER TO RESPECTIVE UNITS BOM.
 - 7.- POWER METER AND CURRENT TRANSFORMERS ARE PART OF AN ACCESSORY KIT TO BE INSTALLED BY END USER

CIRCUIT BOARD PLUG AND TERMINAL ASSIGNMENTS

COMPRESSOR INVERTER	POWER CONNECTION
CN2 TERMINAL BLOCK	INV R - L1 POWER SUPPLY
+24 - PRESSURE TRANSDUCER POWER SUPPLY	INV S - L2 POWER SUPPLY
A11 - PRESSURE TRANSDUCER ANALOG INPUT	INV T - L3 POWER SUPPLY
A12 - DISCHARGE TEMPERATURE SENSOR	INV GND - GROUND
A01 - FAN SIGNAL ANALOG OUTPUT	U - COMPRESSOR POWER SUPPLY L1
GND - INVERTER SIGNAL GROUND	V - COMPRESSOR POWER SUPPLY L2
	W - COMPRESSOR POWER SUPPLY L3

J14 TERMINAL BLOCK
+24 - STO POWER SUPPLY
ST01 - SAFE TORQUE OFF 1
ST02 - SAFE TORQUE OFF 2
COM - STO COMMON

MODBUS COMMUNICATION BOARD
RS485+ - RS485A
RS485- - RS485B

NOMENCLATURE

LINE	STANDARD DEVICES
7A	QS1 - PRIMARY POWER SUPPLY
4D	QF1 - VFD FUSE BLOCK
4C	QF2 - CONDENSER FAN FUSE BLOCK
6D	FU1 - EXHAUST FAN XFMR FUSE
7D	FU2 - EXHAUST FAN FUSE
8D	FAN-TS - EXHAUST FAN THERMOSTAT

.....	FACTORY SUPPLIED LINE VOLTAGE
.....	FIELD INSTALLED LINE VOLTAGE WIRING
.....	OPTIONAL LINE VOLTAGE WIRING
.....	FACTORY SUPPLIED 24 VOLT NEC CLASS 2 WIRING
.....	RELAY INTERNAL CIRCUIT
.....	OPTIONAL 24 VOLT WIRING
.....	FIELD SUPPLIED 24V NEC CLASS 2 WIRING
.....	FIELD SUPPLIED EARTH GROUNDING WIRE
.....	PIGTAIL LEADS 24VOLT WIRING
.....	TERMINAL STRIP CONNECTION
.....	GROUNDING LUG CONNECTION
.....	COMPONENT PLUG CONNECTION

WIRE COLOUR CODE

ORN - ORANGE	PR - PURPLE	BLU - BLUE
RED - RED	GRN - GREEN	BLK - BLACK
BRN - BROWN	Y - YELLOW	WHT - WHITE

1050 DEARBORN DRIVE, P.O. BOX 29186
COLUMBUS, OHIO 43229

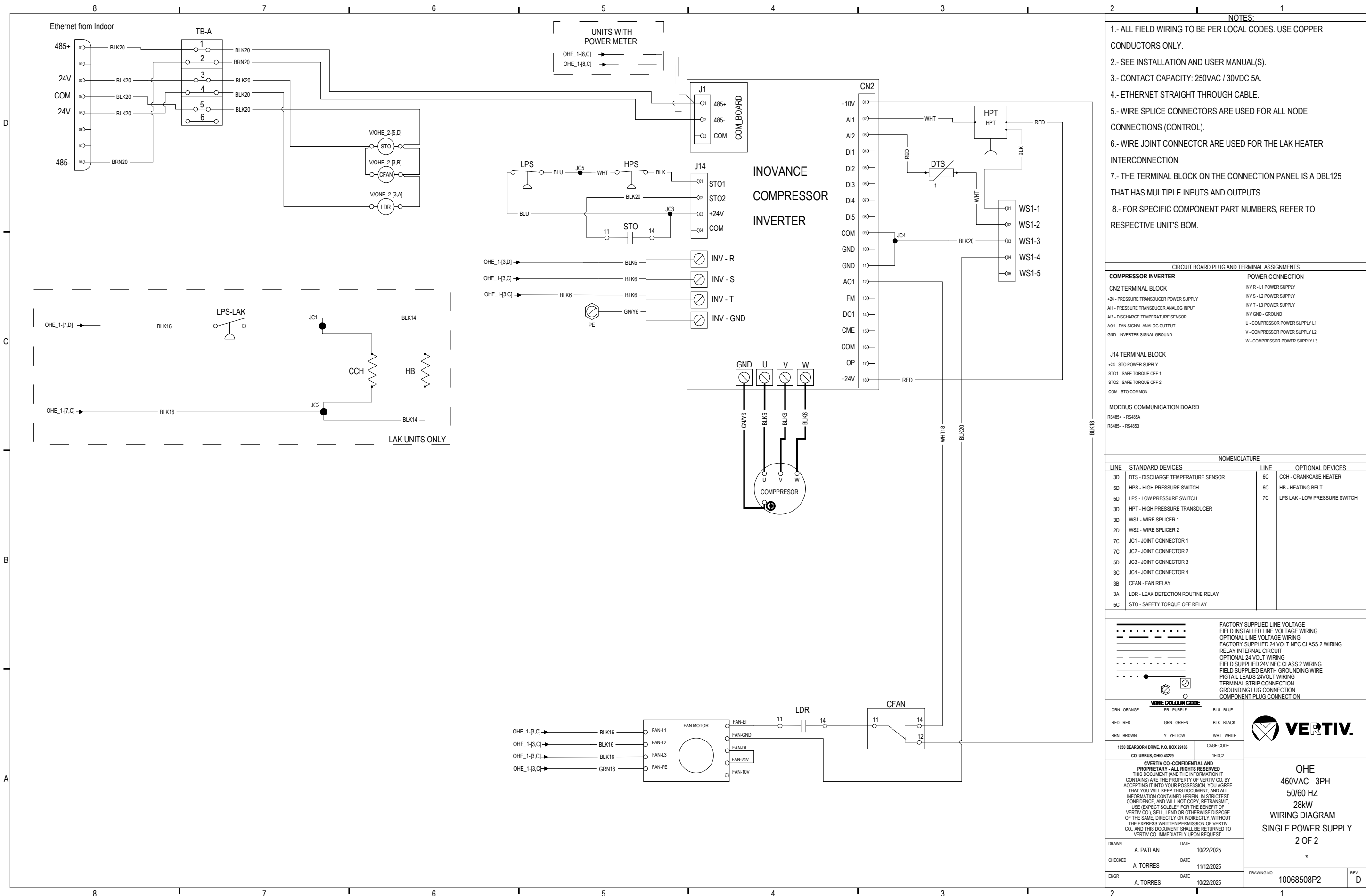
CAGE CODE
1EDC2

VERTIV.

OHE
460VAC - 3PH
28kW
WIRING DIAGRAM
50/60 HZ
SINGLE POWER SUPPLY
1 OF 2
*

DRAWN	DATE
A. PATLAN	10/22/2025
CHECKED	DATE
A. TORRES	11/12/2025
ENGR	DATE
A. TORRES	10/22/2025

DRAWING NO 10068508P2 REV D



- NOTES:**
- 1.- ALL FIELD WIRING TO BE PER LOCAL CODES. USE COPPER CONDUCTORS ONLY.
 - 2.- SEE INSTALLATION AND USER MANUAL(S).
 - 3.- CONTACT CAPACITY: 250VAC / 30VDC 5A.
 - 4.- ETHERNET STRAIGHT THROUGH CABLE.
 - 5.- WIRE SPLICE CONNECTORS ARE USED FOR ALL NODE CONNECTIONS (CONTROL).
 - 6.- WIRE JOINT CONNECTOR ARE USED FOR THE LAK HEATER INTERCONNECTION
 - 7.- THE TERMINAL BLOCK ON THE CONNECTION PANEL IS A DBL125 THAT HAS MULTIPLE INPUTS AND OUTPUTS
 - 8.- FOR SPECIFIC COMPONENT PART NUMBERS, REFER TO RESPECTIVE UNIT'S BOM.

CIRCUIT BOARD PLUG AND TERMINAL ASSIGNMENTS

COMPRESSOR INVERTER	POWER CONNECTION
CN2 TERMINAL BLOCK	INV R - L1 POWER SUPPLY
+24 - PRESSURE TRANSDUCER POWER SUPPLY	INV S - L2 POWER SUPPLY
AI1 - PRESSURE TRANSDUCER ANALOG INPUT	INV T - L3 POWER SUPPLY
AI2 - DISCHARGE TEMPERATURE SENSOR	INV GND - GROUND
AO1 - FAN SIGNAL ANALOG OUTPUT	U - COMPRESSOR POWER SUPPLY L1
GND - INVERTER SIGNAL GROUND	V - COMPRESSOR POWER SUPPLY L2
	W - COMPRESSOR POWER SUPPLY L3

J14 TERMINAL BLOCK

+24 - STO POWER SUPPLY
STO1 - SAFE TORQUE OFF 1
STO2 - SAFE TORQUE OFF 2
COM - STO COMMON

MODBUS COMMUNICATION BOARD

RS485+ - RS485A
RS485- - RS485B

NOMENCLATURE

LINE	STANDARD DEVICES	LINE	OPTIONAL DEVICES
3D	DTS - DISCHARGE TEMPERATURE SENSOR	6C	CCH - CRANKCASE HEATER
5D	HPS - HIGH PRESSURE SWITCH	6C	HB - HEATING BELT
5D	LPS - LOW PRESSURE SWITCH	7C	LPS LAK - LOW PRESSURE SWITCH
3D	HPT - HIGH PRESSURE TRANSDUCER		
3D	WS1 - WIRE SPLICER 1		
2D	WS2 - WIRE SPLICER 2		
7C	JC1 - JOINT CONNECTOR 1		
7C	JC2 - JOINT CONNECTOR 2		
5D	JC3 - JOINT CONNECTOR 3		
3C	JC4 - JOINT CONNECTOR 4		
3B	CFAN - FAN RELAY		
3A	LDR - LEAK DETECTION ROUTINE RELAY		
5C	STO - SAFETY TORQUE OFF RELAY		

FACTORY SUPPLIED LINE VOLTAGE
 FIELD INSTALLED LINE VOLTAGE WIRING
 OPTIONAL LINE VOLTAGE WIRING
 FACTORY SUPPLIED 24 VOLT NEC CLASS 2 WIRING
 RELAY INTERNAL CIRCUIT
 OPTIONAL 24 VOLT WIRING
 FIELD SUPPLIED 24V NEC CLASS 2 WIRING
 FIELD SUPPLIED EARTH GROUNDING WIRE
 PIGTAIL LEADS 24VOLT WIRING
 TERMINAL STRIP CONNECTION
 GROUNDING LUG CONNECTION
 COMPONENT PLUG CONNECTION

WIRE COLOUR CODE

ORN - ORANGE	PR - PURPLE	BLU - BLUE
RED - RED	GRN - GREEN	BLK - BLACK
BRN - BROWN	Y - YELLOW	WHT - WHITE

1050 DEARBORN DRIVE, P.O. BOX 29186
 COLUMBUS, OHIO 43229

CAGE CODE
 1EDC2

VERTIV

OHE
 460VAC - 3PH
 50/60 HZ
 28kW
 WIRING DIAGRAM
 SINGLE POWER SUPPLY
 2 OF 2

DATE 10/22/2025
 DATE 11/12/2025
 DATE 10/22/2025

DRAWN A. PATLAN
 CHECKED A. TORRES
 ENGR A. TORRES

DRAWING NO 10068508P2
 REV D



Vertiv.com | Vertiv Headquarters, 505 N Cleveland Ave, Westerville, OH 43082 USA

© 2026 Vertiv Group Corp. All rights reserved. Vertiv™ and the Vertiv logo are trademarks or registered trademarks of Vertiv Group Corp. All other names and logos referred to are trade names, trademarks or registered trademarks of their respective owners. While every precaution has been taken to ensure accuracy and completeness here, Vertiv Group Corp. assumes no responsibility, and disclaims all liability, for damages resulting from use of this information or for any errors or omissions.